

# TAPWARE

A Simplified Guide to Planning Your Tapware & Hardware:

Shopping for bathroom, kitchen, and laundry fixtures can be overwhelming. Use this checklist to capture every item you need.

## Shopping List



**DESIGN IT**



**MEASURE IT**

FROM LEFT TO RIGHT  
FROM TOP TO BOTTOM



**SHOP IT**

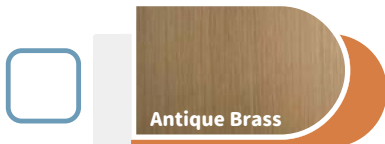


**INSTALL IT**

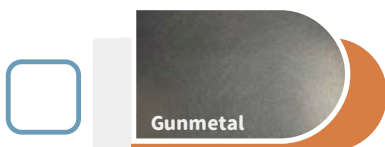


**THEN ENJOY IT :)**

## PICK YOUR COLOURS



A warmer, rustic colour with a vintage feel. Tone variations may occur due to the metal's patina.



A dark, low-gloss finish with a slight brush texture, ideal for modern and industrial designs.

Seeing the true colour  
makes a difference!  
Order a **SAMPLE** now!



# TAPWARE

# Shopping List

## Area/Zone

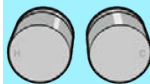


## Spout Options



**Out of wall  
- Wall Spout**

Quantity:



**Round Taps**

Quantity:



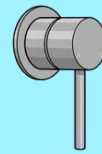
**Cross Taps**

Quantity:



**Progressive  
Mixer**

Quantity:



**Wall  
Mixer**

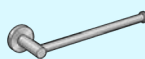
Quantity:



**Out of Vanity  
- Straight Basin Mixer**

Quantity:

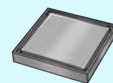
Add



**Hand Towel  
Holder**

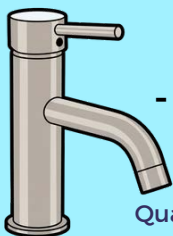
Quantity:

Add



**Tile Insert  
Floor Waste**

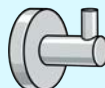
Quantity:



**Out of Vanity  
- Short Basin Mixer**

Quantity:

Add



**Robe  
hook**

Quantity:

Add



**Pop Up Waste  
-No Overflow**

Quantity:

Add



**Door  
Lock**

Quantity:

Add



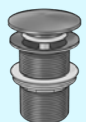
**Door  
Handle**

Quantity:



**Out of Vanity  
- Long Basin Mixer**

Add



**Pop Up Waste  
-Overflow**

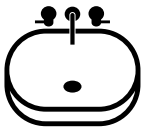
Quantity:



# TAPWARE

## Shopping List

### Area/Zone



BASIN/VANITY



SHOWER



BATH

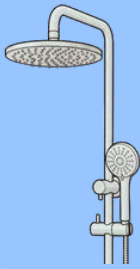


KITCHEN & LAUNDRY



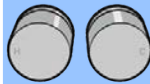
DOORS & TOILET

### Shower Options



Combination  
Shower

Quantity:



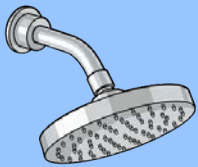
Round Taps

Quantity:



Cross Taps

Quantity:



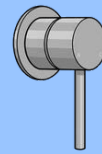
Wall  
Shower

Quantity:



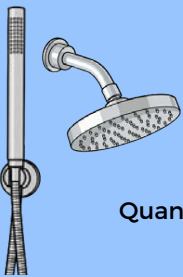
Progressive  
Mixer

Quantity:



Wall  
Mixer

Quantity:



Wall Shower  
+ Sprayer

Quantity:



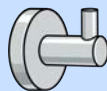
Add +



Shower  
Shelf

Quantity:

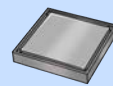
Add +



Robe  
hook

Quantity:

Add +



Tile Insert  
Floor Waste

Quantity:

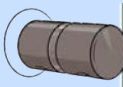
Add +



Towel  
Rail

Quantity:

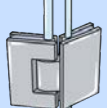
Add +



Shower  
Door Handle

Quantity:

Add +



Shower Hinge  
Glass to Glass

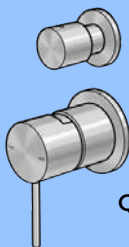
Quantity:

Add +



Shower Glass  
Clamp

Quantity:



Shower  
Diverter

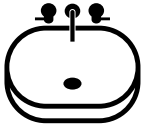
Quantity:



# TAPWARE

# Shopping List

## Area/Zone



BASIN/VANITY



SHOWER



BATH



KITCHEN & LAUNDRY



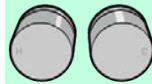
DOORS & TOILET

## Spout Options



Free Standing  
Spout

Quantity:



Round Taps

Quantity:



Cross Taps

Quantity:



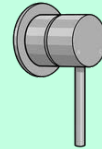
Wall  
Spout

Quantity:



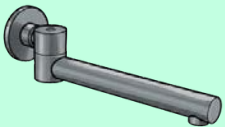
Progressive  
Mixer

Quantity:



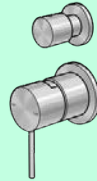
Wall  
Mixer

Quantity:



Swivel  
Bath Spout

Quantity:



Shower  
Diverter

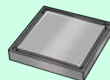
Quantity:



Freestanding Spout + Sprayer

Quantity:

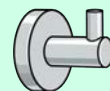
Add +



Tile Insert  
Floor Waste

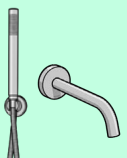
Quantity:

Add +



Robe  
hook

Quantity:



Wall Spout + Sprayer

Quantity:

Add +



Towel  
Rail

Quantity:



Wall Spout + Swivel Bath Spout

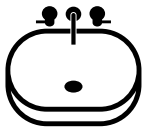
Quantity:



# TAPWARE

## Shopping List

### Area/Zone



BASIN/VANITY



SHOWER



BATH

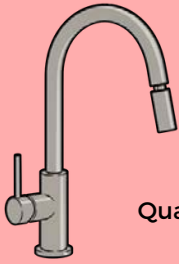


KITCHEN & LAUNDRY



DOORS & TOILET

### Kitchen Mixer Options



Pull-out Kitchen  
Mixer

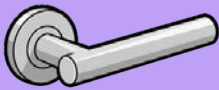
Quantity:



Round Kitchen  
Mixer

Quantity:

### Doors



Door  
Handle

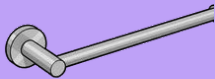
Quantity:



Door  
Lock

Quantity:

### Toilet



Toilet Roll  
Holder

Quantity:

